

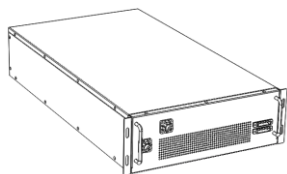
Overview

Vision Technology provides safe LiFePO4 battery solutions for UPS and Energy storage system. This battery system serves for UPS and Energy storage system with perfect compatibility and safe long cycle life.

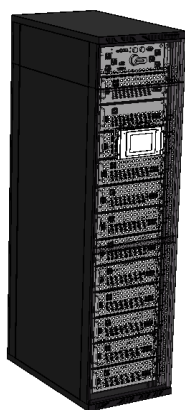
Features

- Can/RS485 Communication output for monitoring
- Achieve up 32 BMU in cascade communication
- Internal cell balancing ,Passive equalization , the maximum equalization current up to 300mA
- High-precision cell voltage and temperature acquisition: $\pm 5\text{mv}$, $\pm 1^\circ\text{C}$;
- Fan control circuit and interface, realize heat dissipation inside the module

Rack Preview



Module 51.2V100Ah



Rack 614V100Ah

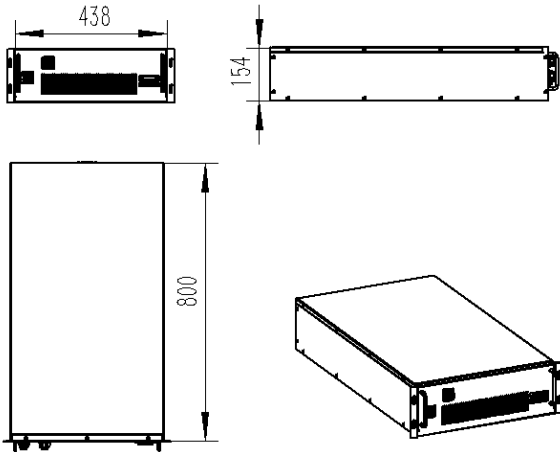
Performance Data

Time(min)	>5	>10	15	30	60
Constant Power(kw)	266.2	254.5	228.5	121.1	60.2
Constant Current(A)	450	430	400	200	100

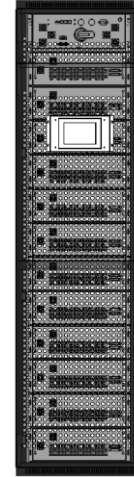
System Specification

Voltage Range(V)	480~691
Cell	3.2V50Ah
Series & Parallels	192S2P
Rated Voltage(V)	614
Rated Capacity(Ah)	100
Rated Energy(KWh)	61.4
Maximum Output Power(KW)	270
Maximum Discharge Current(A)	500
Maximum Charge Current(A)	100
Discharge cut-off voltage(V)	480
Max Charge voltage(V)	691
Backup time(228kw)	15min
Cycle life(@25°C,1C/1C,100%DOD)	>2500
Rack Dimension(W* D* H)	600*1000*2300 mm
System Dimension(W* D* H)	600*1000*2300 mm
Total Weight(Kg)	Approx.1000
Thermal Management	Air cooling
Operating temperature	-20 ~ 65°C
Operating humidity	60 ± 25%R.H.
Certified	CE/UN38.3
Communication	MODBUS/CAN/RS485
Dry Contact	optional
System parallels	YES
Screen	optional

Module size



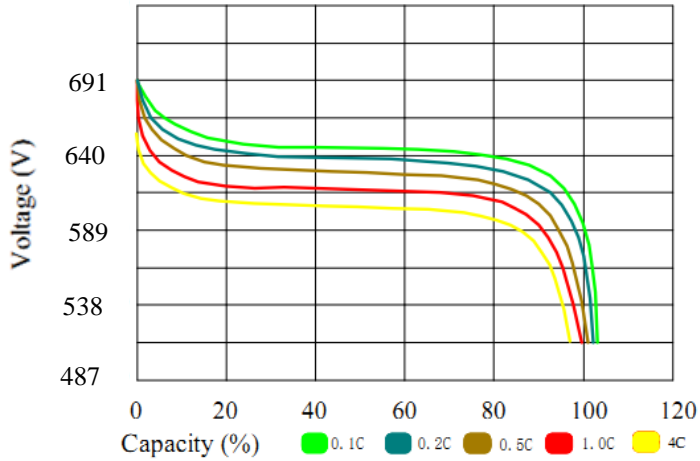
Parallels Solution Preview



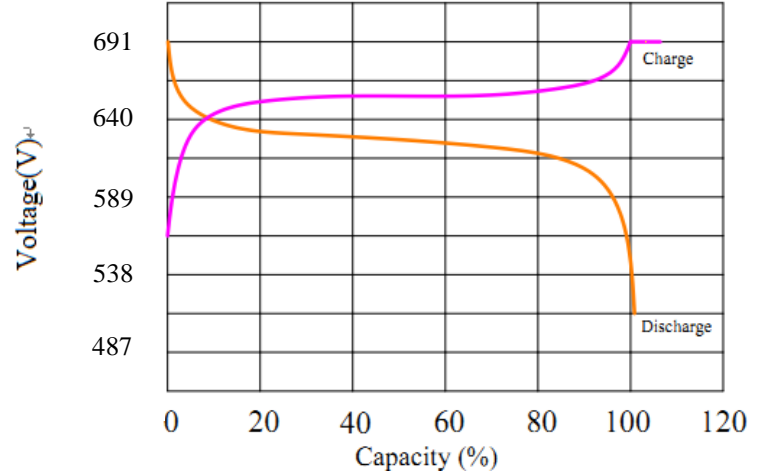
System 614V100Ah

Characteristics Curve

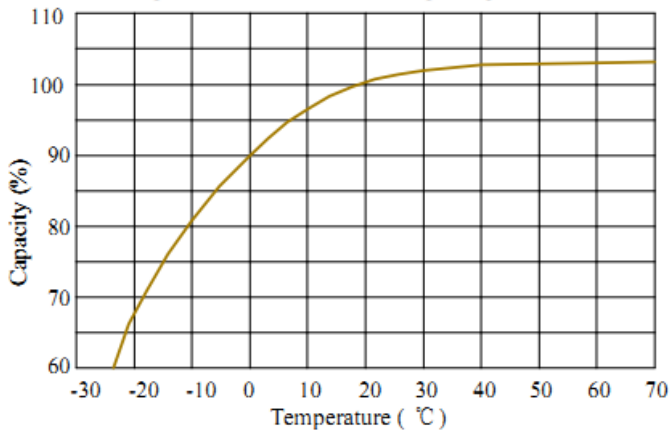
Discharge Performance at 25 °C



Charge and Discharge at 25 °C, 0.2C



Temperature effects on capacity at 0.2C



Cycle life with DOD at 25 °C, 0.2C

