

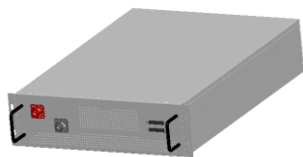
Overview

Vision Technology provides safe LiFePO4 battery solutions for UPS and Energy storage system. This battery system serves for UPS and Energy storage system with perfect compatibility and safe long cycle life.

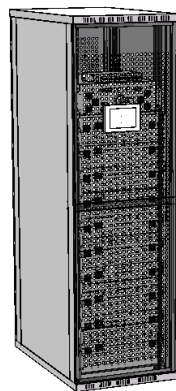
Features

- Can/RS485 Communication output for monitoring
- Achieve up 32 BMU in cascade communication
- Internal cell balancing ,Passive equalization , the maximum equalization current up to 300mA
- High-precision cell voltage and temperature acquisition: $\pm 5\text{mv}$, $\pm 1^\circ\text{C}$;
- Fan control circuit and interface, realize heat dissipation inside the module

Rack Preview



Module 51.2V60Ah



Rack 512V60Ah

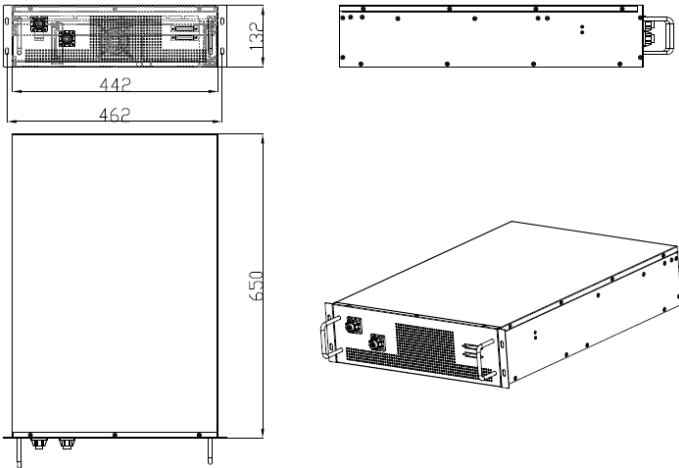
Performance Data

Time(min)	MAX	6	10	15	30	60
Constant Power(kw)	288	267	177	118	59	30
Constant Current(A)	610	600	360	240	120	60

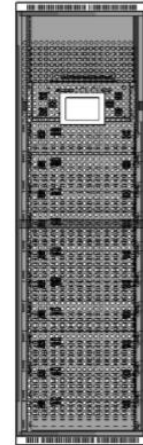
System Specification

Voltage Range(V)	400~576
Cell	3.2V20Ah
Series & Parallels	160S3P
Rated Voltage(V)	512
Rated Capacity(Ah)	60
Rated Energy(KWh)	30.7
Maximum Output Power(Kw)	288
Maximum Discharge Current(A)	610
Maximum Charge Current(A)	60
Discharge cut-off voltage(V)	400~448
Max Charge voltage(V)	568~576
Backup time	6min
Cycle life(@25°C,1C/1C,100%DOD)	>2500
Module Dimension(W* D* H)	442*650*132mm
Rack Dimension(W* D* H)	600*1000*2000 mm
Total Weight(Kg)	Approx.540
Thermal Management	Air cooling
Operating temperature	-20 ~ 65°C
Operating humidity	60 ±25%R.H.
Certified	UL/CE/UN38.3
Communication	CAN/RS485
Dry Contact	optional
System parallels	Y
Screen	optional

Module size



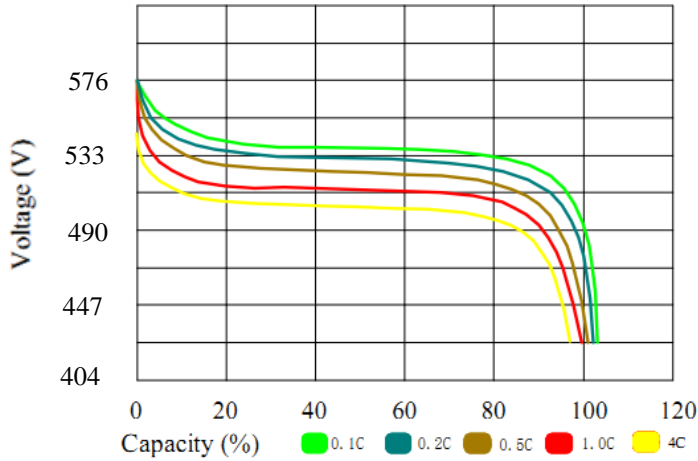
Solution Preview



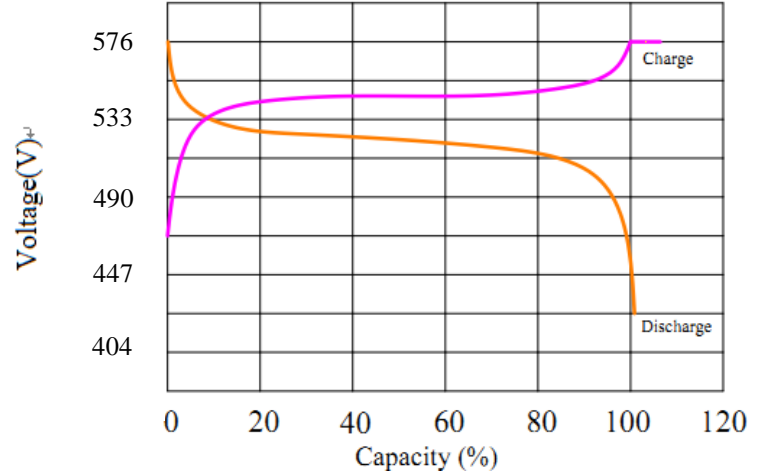
System 512V60Ah

Characteristics Curve

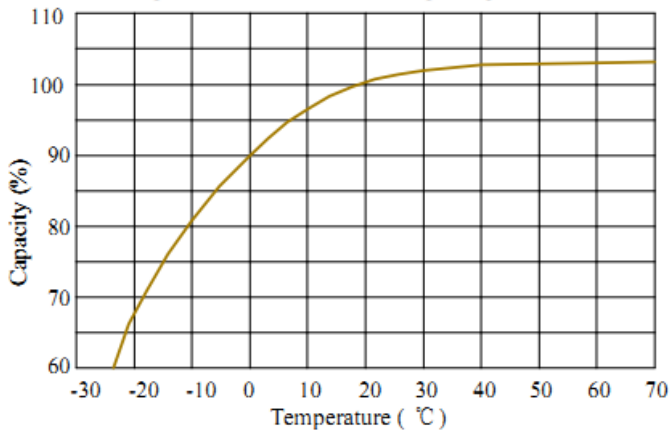
Discharge Performance at 25 °C



Charge and Discharge at 25 °C, 0.2C



Temperature effects on capacity at 0.2C



Cycle life with DOD at 25 °C, 0.2C

