

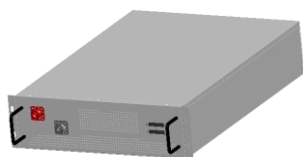
Overview

Vision Technology provides safe LiFePO4 battery solutions for UPS and Energy storage system. This battery system serves for UPS and Energy storage system with perfect compatibility and safe long cycle life.

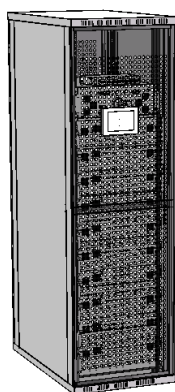
Features

- Can/RS485 Communication output for monitoring
- Achieve up 32 BMU in cascade communication
- Internal cell balancing ,Passive equalization , the maximum equalization current up to 300mA
- High-precision cell voltage and temperature acquisition: $\pm 5\text{mv}$, $\pm 1^\circ\text{C}$;
- Fan control circuit and interface, realize heat dissipation inside the module

Rack Preview



Module 51.2V40Ah



Rack 512V40Ah

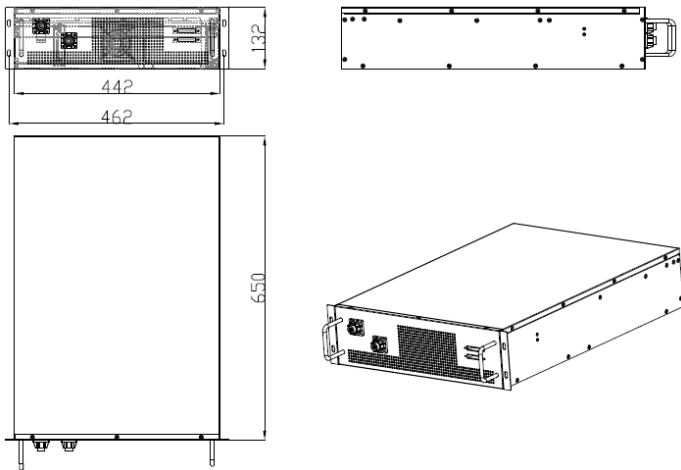
Performance Data

Time(min)	>5	10	15	30
Constant Power(kw)	220	120	80	40
Constant Current(A)	460	240	160	80

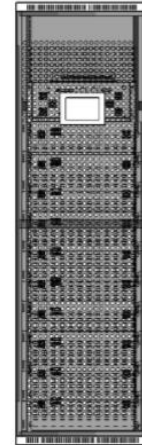
System Specification

Voltage Range(V)	400~576
Cell	3.2V20Ah
Series & Parallels	160S2P
Rated Voltage(V)	512
Rated Capacity(Ah)	40
Rated Energy(KWh)	20.4
Maximum Output Power(Kw)	220
Maximum Discharge Current(A)	480
Maximum Charge Current(A)	40
Discharge cut-off voltage(V)	400~448
Max Charge voltage(V)	568~576
Backup time	>5min
Cycle life(@25°C,1C/1C,100%DOD)	>2500
Module Dimension(W* D* H)	442*650*132 mm
Rack Dimension(W* D* H)	600*1000*2000 mm
Total Weight(Kg)	Approx.420
Thermal Management	Air cooling
Operating temperature	-20 ~ 65°C
Operating humidity	60 \pm 25%R.H.
Certified	UL/CE/UN38.3
Communication	CAN/RS485
Dry Contact	optional
System parallels	Y
Screen	optional

Module size



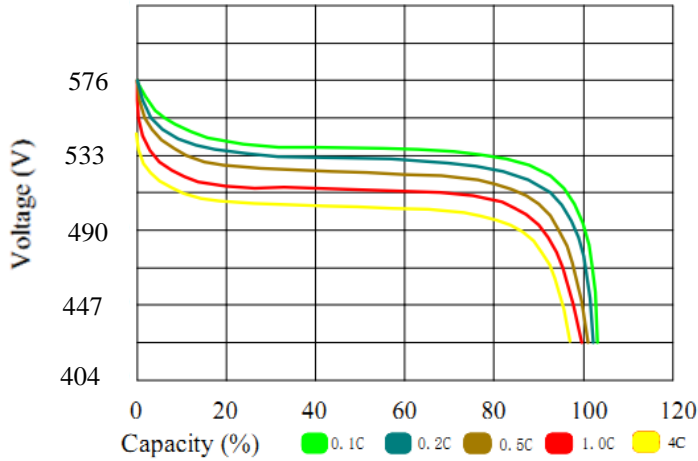
Solution Preview



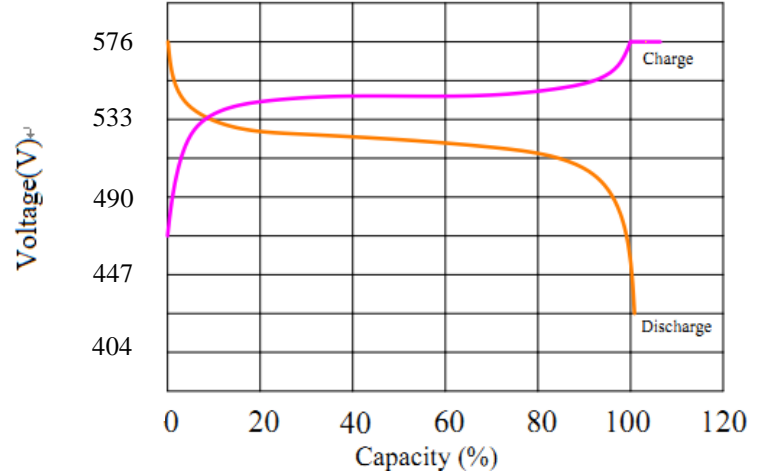
System 512V40Ah

Characteristics Curve

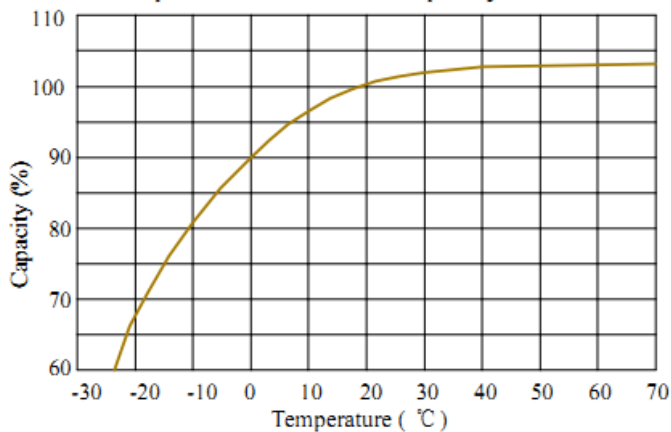
Discharge Performance at 25 °C



Charge and Discharge at 25 °C, 0.2C



Temperature effects on capacity at 0.2C



Cycle life with DOD at 25 °C, 0.2C

