

CL1000 2V 1000Ah(10hr)

The rechargeable batteries are lead-lead dioxide systems. The dilute sulfuric acid electrolyte is absorbed by separators and plates and thus immobilized. Should the battery be accidentally overcharged producing hydrogen and oxygen, special one-way valves allow the gases to escape thus avoiding excessive pressure build-up. Otherwise, the battery is completely sealed and is, therefore, maintenance-free, leak proof and usable in any position.



Battery Construction

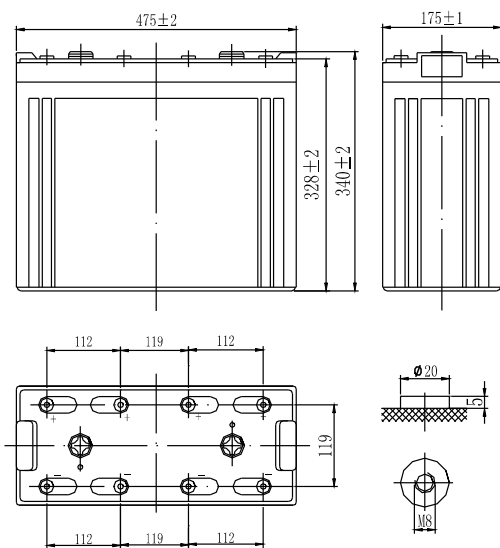
| | | | | | | | | |
|--------------|----------------|----------------|-----------|-------|--------------|----------|------------|---------------|
| Component | Positive plate | Negative plate | Container | Cover | Safety valve | Terminal | Separator | Electrolyte |
| Raw material | Lead dioxide | Lead | ABS | ABS | Rubber | Copper | Fiberglass | Sulfuric acid |

General Features

- Absorbent Glass Mat (AGM) technology for efficient gas recombination of up to 99% and freedom from electrolyte maintenance or water adding.
- Not restricted for air transport-complies with IATA/ICAO Special Provision A67.
- UL-recognized component.
- Can be mounted in any orientation.
- Computer designed lead, calcium tin alloy grid for high power density.
- Long service life, float or cyclic applications.
- Maintenance-free operation.
- Low self discharge.

Dimensions and Weight

Length(mm / inch).....475 / 18.70
 Width(mm / inch).....175 / 6.89
 Height(mm / inch).....328 / 12.91
 Total Height(mm / inch).....340 / 13.39
 Approx. Weight(Kg / lbs).....66.5 / 146.6



Performance Characteristics

Nominal Voltage2V
 Number of cell1
 Design Life20 years
 Nominal Capacity 77°F(25°C)
 10 hour rate (100A, 1.8V).....1000Ah
 5 hour rate (180A, 1.75V).....900Ah
 1 hour rate (620A, 1.6V).....620Ah
 Internal Resistance
 Fully Charged battery 77°F(25°C)0.19mOhms
 Self-Discharge
 3% of capacity declined per month at 20°C(average)
 Operating Temperature Range
 Discharge-20~60°C
 Charge-10~60°C
 Storage-20~60°C
 Max. Discharge Current 77°F(25°C)4000A(5s)
 Charge Methods: Constant Voltage Charge 77°F(25°C)
 Cycle use2.35-2.45V
 Maximum charging current200A
 Temperature compensation.....-5.0mV/°C
 Standby use2.25-2.3V
 Temperature compensation.....-3.3mV/°C

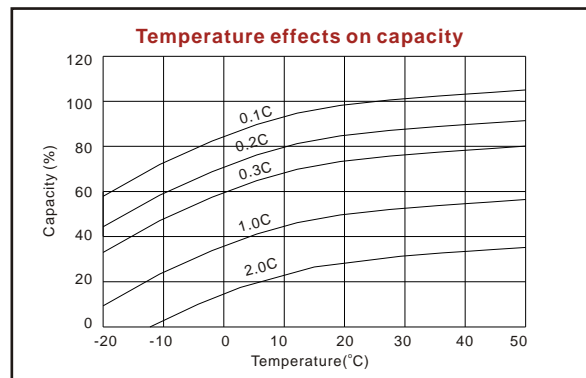
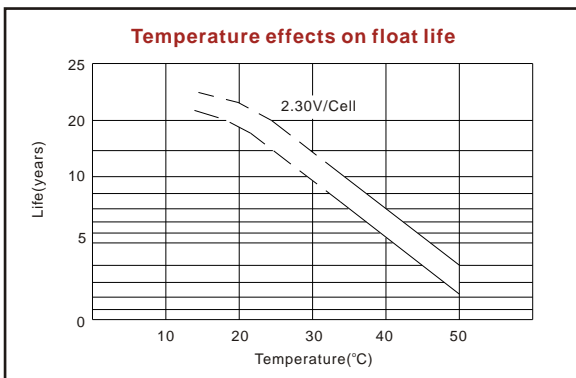
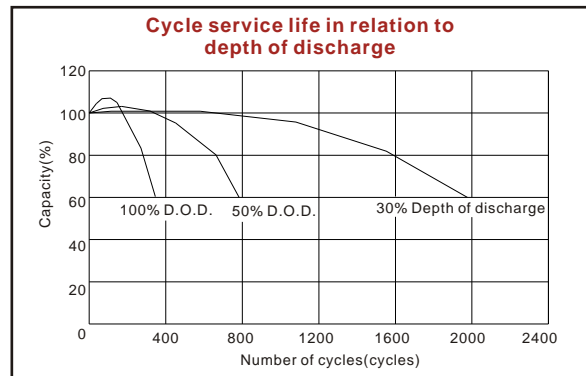
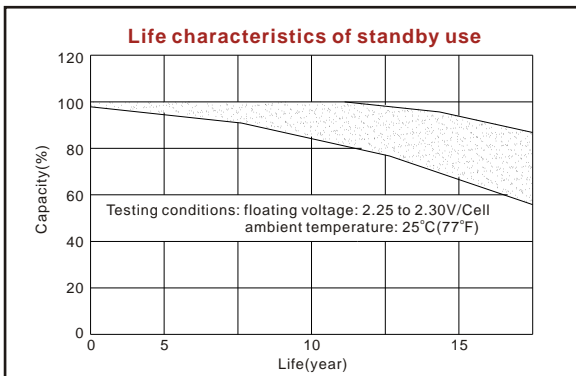
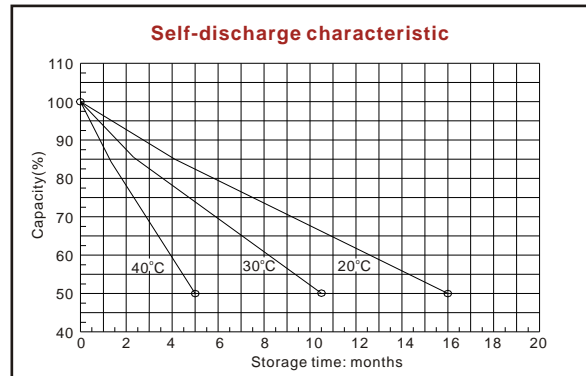
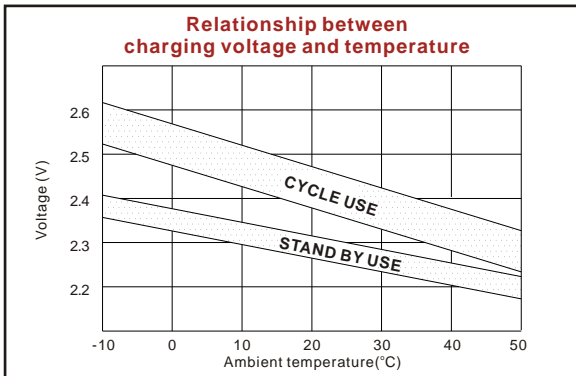
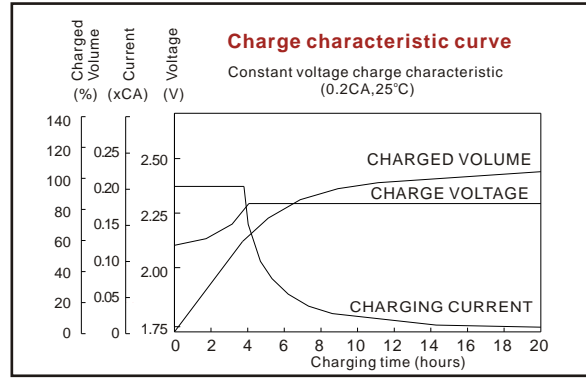
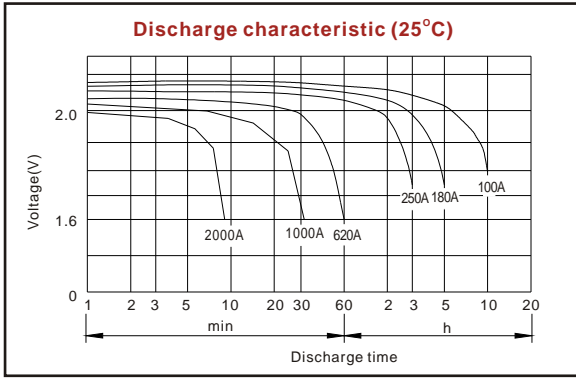
Discharge Constant Current (Amperes at 77°F25°C)

| End Point Volts/Cell | 10min | 15min | 30min | 45min | 1h | 3h | 5h | 10h |
|----------------------|-------|-------|-------|-------|-----|-----|-----|-----|
| 1.60V | 1855 | 1408 | 1063 | 758 | 620 | 261 | 195 | 108 |
| 1.65V | 1758 | 1340 | 1016 | 728 | 602 | 256 | 190 | 106 |
| 1.70V | 1658 | 1270 | 967 | 696 | 582 | 253 | 185 | 104 |
| 1.75V | 1555 | 1199 | 917 | 663 | 546 | 250 | 180 | 102 |
| 1.80V | 1451 | 1127 | 866 | 628 | 534 | 243 | 173 | 100 |

Discharge Constant Power (Watts at 77°F25°C)

| End Point Volts/Cell | 10min | 15min | 30min | 45min | 1h | 2h | 3h | 5h |
|----------------------|-------|-------|-------|-------|------|-----|-----|-----|
| 1.60V | 2965 | 2421 | 1804 | 1360 | 1114 | 720 | 522 | 360 |
| 1.65V | 2793 | 2290 | 1713 | 1298 | 1067 | 702 | 507 | 354 |
| 1.70V | 2620 | 2158 | 1621 | 1233 | 1018 | 688 | 497 | 348 |
| 1.75V | 2447 | 2024 | 1527 | 1166 | 967 | 676 | 488 | 341 |
| 1.80V | 2276 | 1890 | 1432 | 1099 | 915 | 661 | 476 | 335 |

(Note)The above characteristics data are average values obtained within three charge/discharge cycles not the minimum values.



ISO9001:2000

MH25860

G4M19906-9202-E-16

www.vision-batt.com

Shenzhen Center Power Tech. Co., Ltd.
Center Power Industrial Park, Tongfu Industrial District Dapeng Town, 518120 Shenzhen, China
Tel: (+86-755) 8431 8088 Fax: (+86-755) 8431 8038 E-mail: sales@vision-batt.com